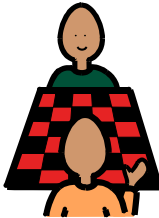





REGOLE DEL GIOCO DOMINO

1) **2** +  **0** PIÙ GIOCATORI

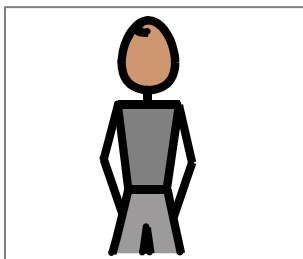
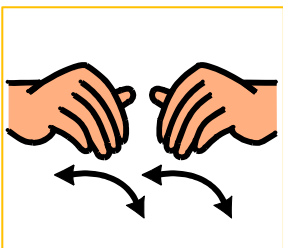

DUE O PIÙ GIOCATORI

2)   **7**  DOMINO

OGNI GIOCATORE PRENDE 7 DOMINO

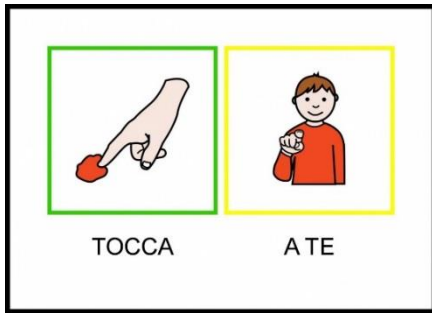
3)   **TOCCA A ME**

TOCCA AL GIOCATORE 1

4)   **1**   **UN DOMINO SUL TAVOLO**

IL GIOCATORE 1 METTE UN DOMINO SUL TAVOLO

4)

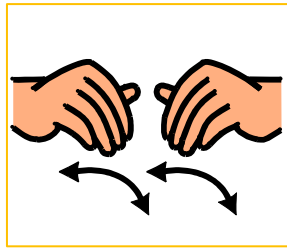


TOCCA AL GIOCATORE 2

5)



IL GIOCATORE 2

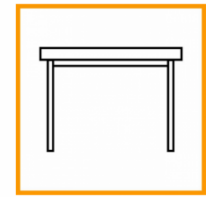


METTE

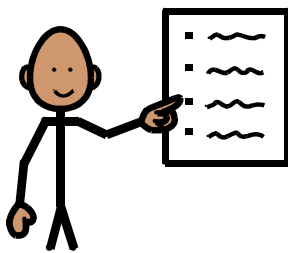
UN



DOMINO SUL TAVOLO



6)

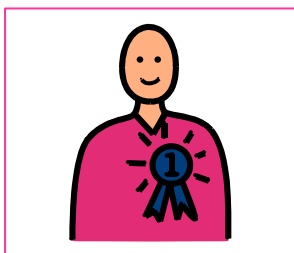


REGOLA:

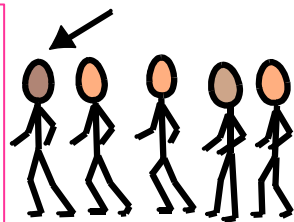


I DOMINO **UGUALI** SI TOCCANO

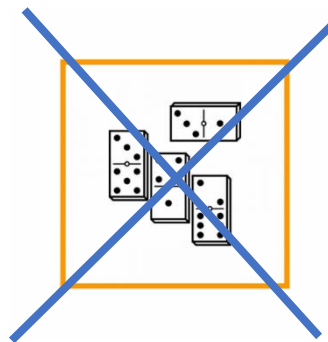
7)



VINCE



IL PRIMO GIOCATORE CHE NON HA PIÙ DOMINO



8) QUANDO UN GIOCATORE NON PUÒ GIOCARE, PESCA UN DOMINO. SE LO PUÒ METTERE, LO METTE. SE NON LO PUÒ METTERE, LO TIENE INSIEME AGLI ALTRI. POI TOCCA ALL'ALTRO GIOCATORE.